

Kontorno

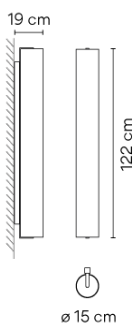
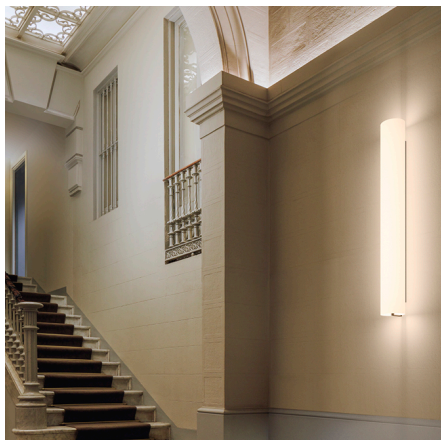
6446

Design By Sebastian Herkner

VIBIA

The glass shade wall light features an open metal frame imbedded with LEDs that contains a cylindrical diffuser made of mouthblown opaline glass. The black frame is affixed to the wall, generating a warm, 360-degree glow as if from a fire. Install in a vertical position.

Model Sheet



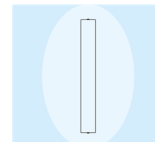
Finish	11 Black NCS S 8500-N
LED	2200 K / 2700 K / 3000 K / 3500 K
Control	DALI / 1-10V / Casambi / Push
Optional	DALI or Push or Casambi / DALI or Push or Casambi / DALI or Push or Casambi
Electrical connection	Surface Canopy

Light source	1 x LED STRIP 27,9W 750mA E
LED	CRI>90 2907 lm 104 2200 K / 2700 K / 3000 K / 3500 K
Driver	Constant Current 750 mA 90~305 V 50~60 Hz Dimmable LED IP20 Multi-volt
Application	Wall
Packaging	1 Box 1.43 m x 0.3 m x 0.3 m Gross weight 11.5 kg Net weight 7.5 kg Vol. 0.1287 m3

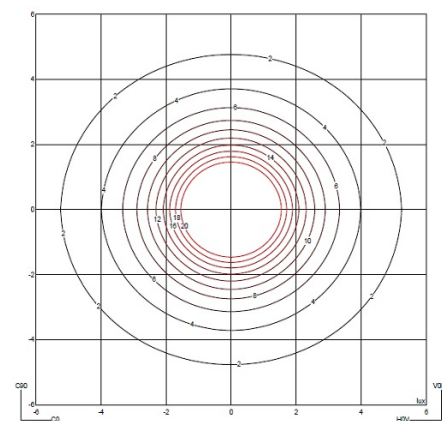
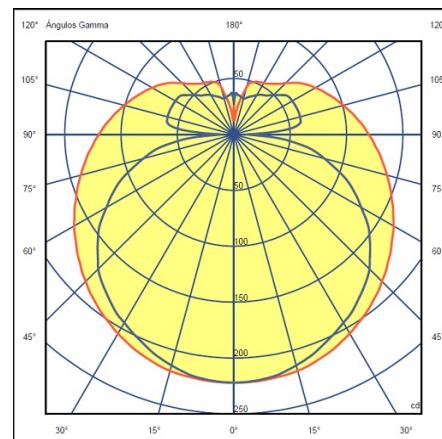
Lighting effect

Volumetric Diffuser

Subtly directed, diffused light that generates a soft hierarchy of light on to the illuminated surface



Photometric Data



Efficiency	41.96 lm/W
Coordinate System	CG
Total Flux	1338.37 lm
Maximum Value	222.01 cd

Min. quantity, upcharge and extra lead time apply

All of our products come with a five-year warranty. Check our legal terms at www.vibia.com/warranty

Vibia Lighting, S.L.U.

Office / Oficina

Progrés 4-6, 08850 Gavà, Barcelona, Spain.

International T +34 934 796 971

Spain / Portugal T +34 934 796 970

customer.service@vibia.com

vibia.com